

Center for State Foster Care and Adoption Data

Webcast Demonstration

SAVE THE DATE

Monday, June 22, 2009

1:00—2:30 p.m. (EST)

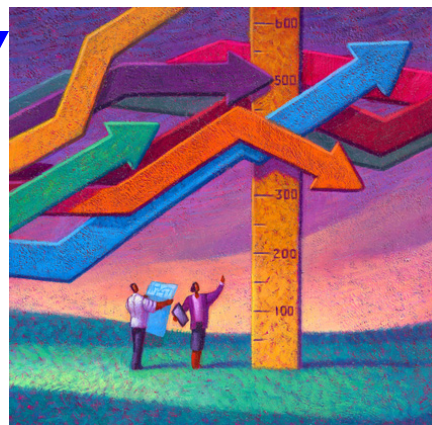
The demo will include information on how the Center's database and decision support web based tools are used to extract and analyze a state's own child welfare administrative data.

The sessions are being repeated monthly. If you are interested in receiving an on-line tutorial on the State Data Center's on-line Multistate Foster Care Data Archive, please contact the person listed on this flyer and register for one of the sessions!

FROM DATA to

INFORMATION to

KNOWLEDGE



Questions answered with the web tool:

- What is the average length of stay in foster for kids in a particular county in my state?
- What is the prevalent placement type for kids of a certain age group or ethnic background?
- Are there places in my state where services are resulting in better outcomes?
- How do the results in my state compare to other states?

Additional data and information on a state's child welfare programs in relation to foundational child welfare outcomes provided using products and services from the Center.

Contact person: Christina M. Crayton, MSW
Phone: 202-682-0100 x257
Fax: 202-289-6555
E-mail: ccrayton@aphsa.org

Improving how information is used for policy and practice improvement in child welfare.